

Selected Date Range: Jan 1, 2010 through Jul 5, 2010
 Selected Organization: Central



Average Age of Completed Work by Priority		
Priority	No of WOs	Avg Age Days
01-Emergency: Same Day	911	5.13
02-Urgent: 2-3 days	605	11.06
03-Routine	1,650	9.09
04-Deferrable	422	9.33
IMMED-Immediate	74	20.25
Average		10.97

Aging							
Work Order Type	AGE10	AGE30	AGE60	AGE90	AGEOVER90	Total for WO Type	
PM-PM	567	0	79	2	4	652	
REP-REPAIR/REPLACE	114	43	26	6	19	208	
SERVTROU-SERVICE/TROUBLE	33	48	12	1	12	106	
SETUP-SETUP	66	21	16	0	0	103	
ST-STANDING WO	54	2	26	0	2	84	
Grand Total						1,153	

PM Compliance by Month			
Month	WOs Due	WOS On Time	Compliance %
2010-01	409	406	99%
2010-02	4	4	100%
2010-03	966	935	97%
2010-04	574	562	98%
2010-05	513	498	97%
2010-06	539	458	85%
Average			96%

PM Compliance by Trade			
Trade	WOs Due	WOS On Time	Compliance %
CUST-OM	12	12	100%
ELEC-OM	627	602	96%
FAC-OM	909	888	98%
HVAC-OM	1,069	1,021	96%
MTW-OM	2,339	2,264	97%
PAINT-OM	1	1	100%
PLUM-OM	1,710	1,703	100%
Average			98%

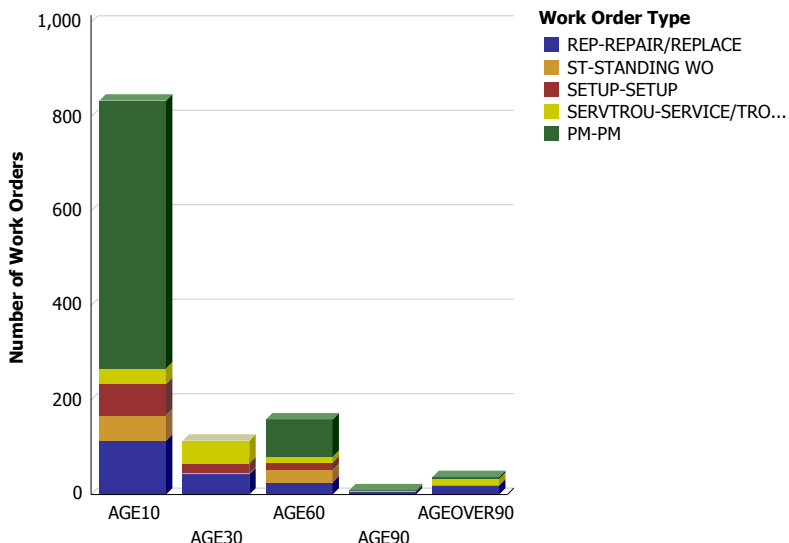
Benchmarks
> 85%
60% - 85%
< 60%

Number of Work Orders by Priority			
Priority	No of WOs	% of Total	
01-Emergency: Same Day	911	25%	
02-Urgent: 2-3 days	605	17%	
03-Routine	1,650	45%	
04-Deferrable	422	12%	
IMMED-Immediate	74	2%	
Grand Total	3,662		

Labor Hours by Work Order Priority			
Priority	Labor Hours	% of Total	
01-Emergency: Same Day	1,793.4705	1%	
02-Urgent: 2-3 days	125,810.887	93%	
03-Routine	5,755.412	4%	
04-Deferrable	1,507.583	1%	
IMMED-Immediate	31.054	0%	
Grand Total	134,898.4065		

Aging Analysis

Work Order Type	AGE10	AGE30	AGE60	AGE90	AGEOVER90	Total for WO Type
PM-PM	567	0	79	2	4	652
REP-REPAIR/REPLACE	114	43	26	6	19	208
SERVTROU-SERVICE/TROUBLE	33	48	12	1	12	106
SETUP-SETUP	66	21	16	0	0	103
ST-STANDING WO	54	2	26	0	2	84
Grand Total						1,153

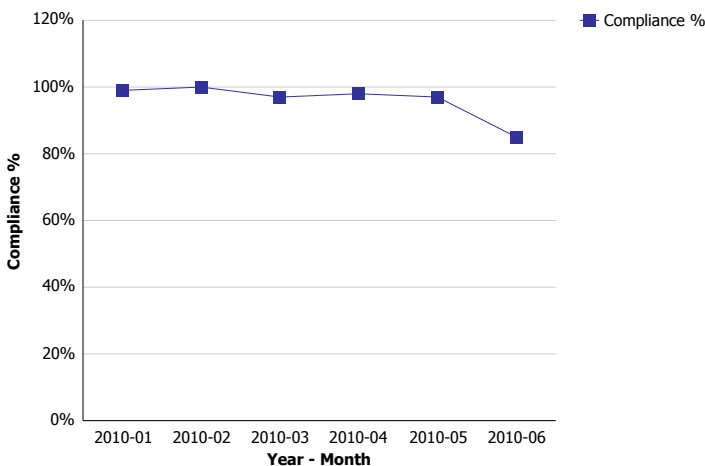


PM Compliance

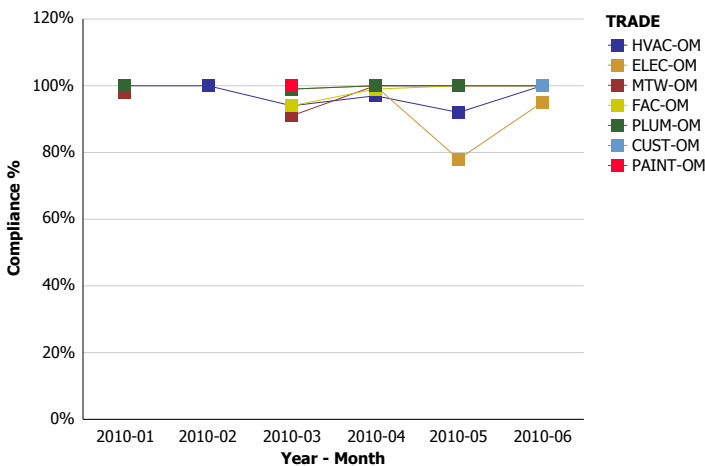
Benchmarks

> 85%
60% - 85%
< 60%

Month	WOs Due	WOS On Time	Compliance %
2010-01	409	406	99%
2010-02	4	4	100%
2010-03	966	935	97%
2010-04	574	562	98%
2010-05	513	498	97%
2010-06	539	458	85%
Average			96%

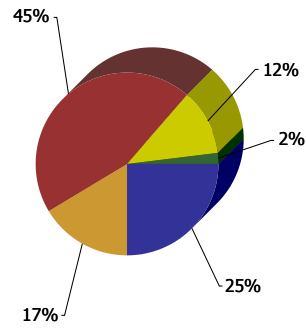


Trade	WOs Due	WOS On Time	Compliance %
CUST-OM	12	12	100%
ELEC-OM	627	602	96%
FAC-OM	909	888	98%
HVAC-OM	1,069	1,021	96%
MTW-OM	2,339	2,264	97%
PAINT-OM	1	1	100%
PLUM-OM	1,710	1,703	100%
Average			98%



Work Order Priority Analysis

Priority	No of WOs	% of Total
01-Emergency: Same Day	911	25%
02-Urgent: 2-3 days	605	17%
03-Routine	1,650	45%
04-Deferrable	422	12%
IMMED-Immediate	74	2%
Grand Total	3,662	



Priority

- 01-Emergency: Same Day
- 02-Urgent: 2-3 days
- 03-Routine
- 04-Deferrable
- IMMED-Immediate

No of WOs